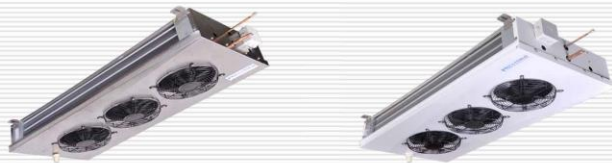




BLC Slim
Evaporators

Slim Line Evaporators
Cold Rooms / Process Rooms / Ante Rooms

BLUECOLD Quality Equipment



BLC - Capacities - 300



Code		M2	M3	M4
$\Delta T_i = 10 \text{ }^\circ\text{K SC1}$	kW	6.1	9.2	12.0
$\Delta T_i = 8 \text{ }^\circ\text{K SC2}$	kW	4.6	6.8	9.1
$\Delta T_i = 5 \text{ }^\circ\text{K SC2}$	kW	2.9	4.6	5.8
Air flow	m³/h	2158	3230	4310
Air throw	m	6.4	7.8	8.7
Surface	m²	12	18	24

Code		M2/L2	M3/L3	M4/L4
Fan Motors	N * \varnothing 300	2	3	4
	RPM	1350	1350	1350
	Amps 230V (A)	0.84	1.26	1.68

Capacity

(1) $\Delta T_i = 10 \text{ }^\circ\text{K SC1}$ (ΔT_i indicates the difference between the air inlet temperature and the evaporating temperature).

The capacity of the aircooler is calculate with freon R404A, evaporating temperature 0°C , room temperature $+10^\circ\text{C}$ RH=85%, conditions related to standard "SC1" in accordance with ENV 328.

(2) $\Delta T_i = 8 \text{ }^\circ\text{K SC2}$ (ΔT_i indicates the difference between the air inlet temperature and the evaporating temperature).

The capacity of the aircooler is calculate with freon R404A, evaporating temperature -8°C , inlet air temperature 0°C RH=85%, conditions related to standard "SC2" in accordance with ENV 328.

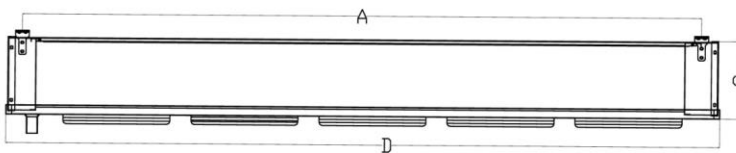
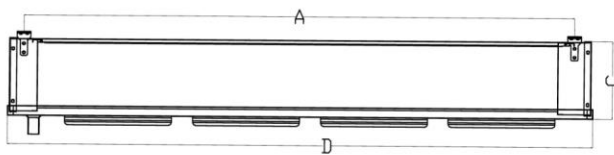
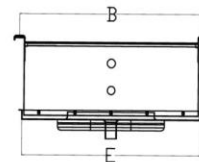
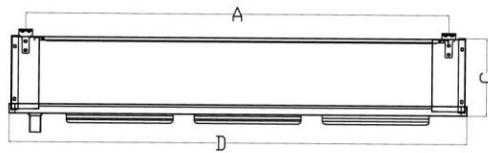
(2) $\Delta T_i = 5 \text{ }^\circ\text{K SC2}$ (ΔT_i indicates the difference between the air inlet temperature and the evaporating temperature).

The capacity of the aircooler is calculate with freon R404A, evaporating temperature -5°C , inlet air temperature 0°C RH=85%, conditions related to standard "SC2" in accordance with ENV 328.

BLC - Dimensions - 300



Code		Slim 2	Slim 3	Slim 4
Net Weight	Kg	36	56	73
Ref.		a	b	c
Dimensions (mm)	A	1065	1527	1989
	B	654	654	654
	C	222	222	222
	D	1190	1652	2114
	E	645	645	645
Connections	Inlet	3/8" SAE	1/2" SAE	1/2" SAE
	Outlet	Ø 18	Ø 18	Ø 22
Drain		3/4" M	3/4" M	3/4" M





Blue Cold Refrigeration Pvt. Ltd

C- 37, 1st Stage, Bommasandra Industrial Estate, Bangalore - 560 099
Mobile : +91 9900 856040 Fax : 080 27831174 E-mail : bluecoldref@gmail.com
www.bluecoldref.com